



# GMT MONTHLY MEMBERSHIP PROGRESS REPORT

Results as of: 4/30/2018

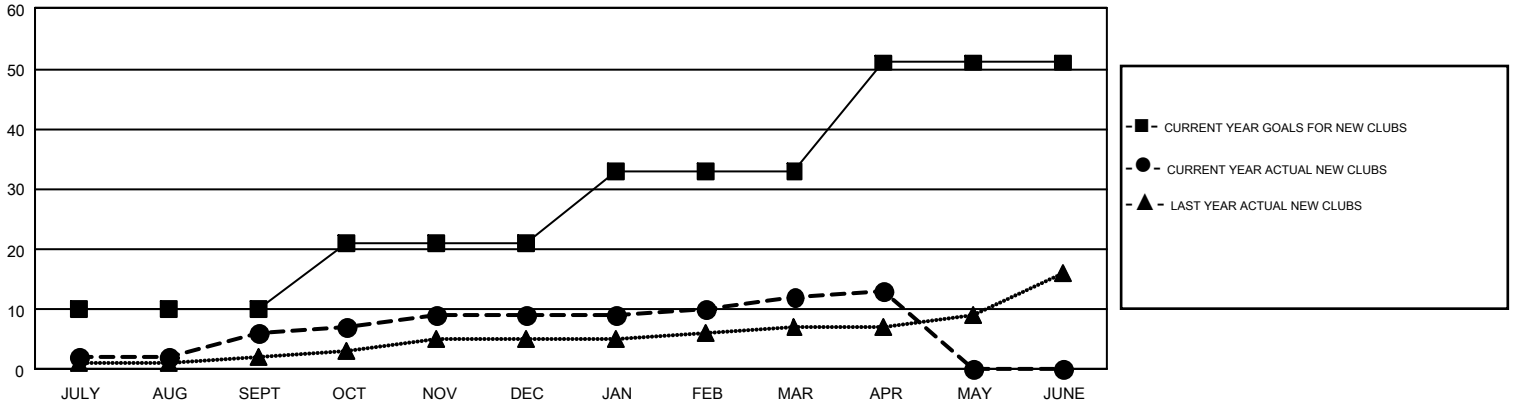
## GMT Constitutional Area 1, Group B

GMT: CINDY GREGG

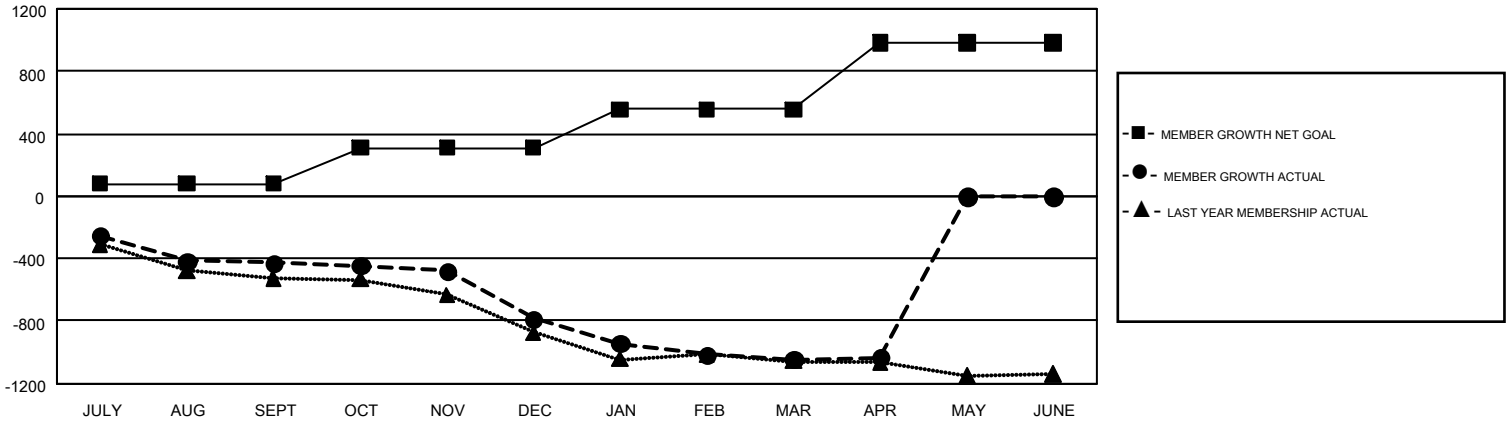
REPORT DOES NOT INCLUDE CLUBS IN UNDISTRICTED AREAS.

Clubs				Members			
RESULTS FOR 2017-2018				RESULTS FOR 2017-2018			
QUARTER	NEW CLUB GOAL	NEW CLUBS	DROPPED CLUBS	QUARTER	MEMBER GROWTH NET GOAL	MEMBER GROWTH ACTUAL	DROPPED MEMBERS ACTUAL (including transfers)
JULY/AUG/SEPT	10	6	5	JULY/AUG/SEPT	81	993	1,289
OCT/NOV/DEC	11	3	11	OCT/NOV/DEC	228	928	1,216
JAN/FEB/MAR	12	3	7	JAN/FEB/MAR	249	859	1,055
APR/MAY/JUNE	18	1	0	APR/MAY/JUNE	423	320	264

GOALS AND ACTUAL NEW CLUBS CUMULATIVE



GOALS AND ACTUAL MEMBERS CUMULATIVE



DROPPED CLUBS: 23	823 CLUBS OF 1,554 ADDED 1 OR MORE NEW MEMBERS	<b>GENDER DISTRIBUTION</b> MALE                    29,761 (71.87%) FEMALE                 11,650 (28.13%)
<b>DROPPED MEMBERS</b> DECEASED                    661 CLUB CANCELLED                124 OTHER                            3,036 <hr/> TOTAL                            3,821	<a href="#">CLICK HERE FOR CUMULATIVE MEMBERSHIP DATA</a>	TOTAL FAMILY UNIT MEMBERS                    7,975  FAMILY MEMBERS PAYING HALF DUES                    4,087